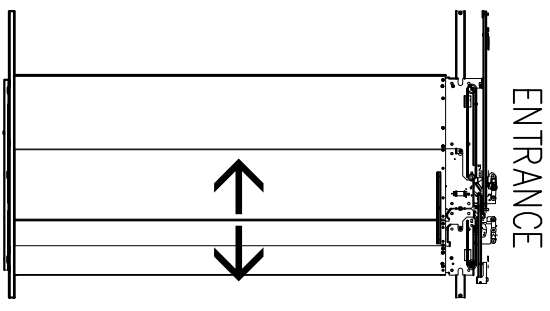
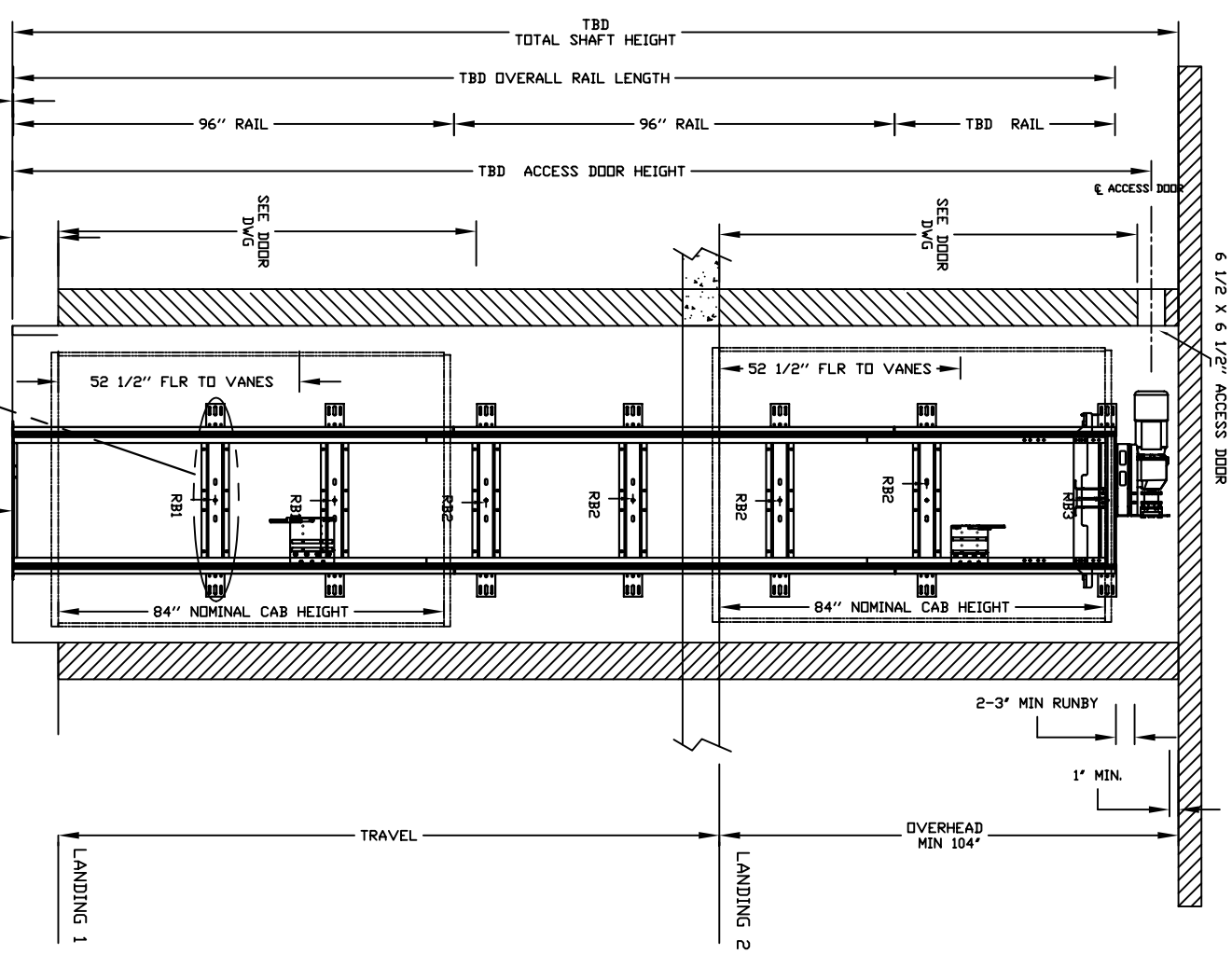
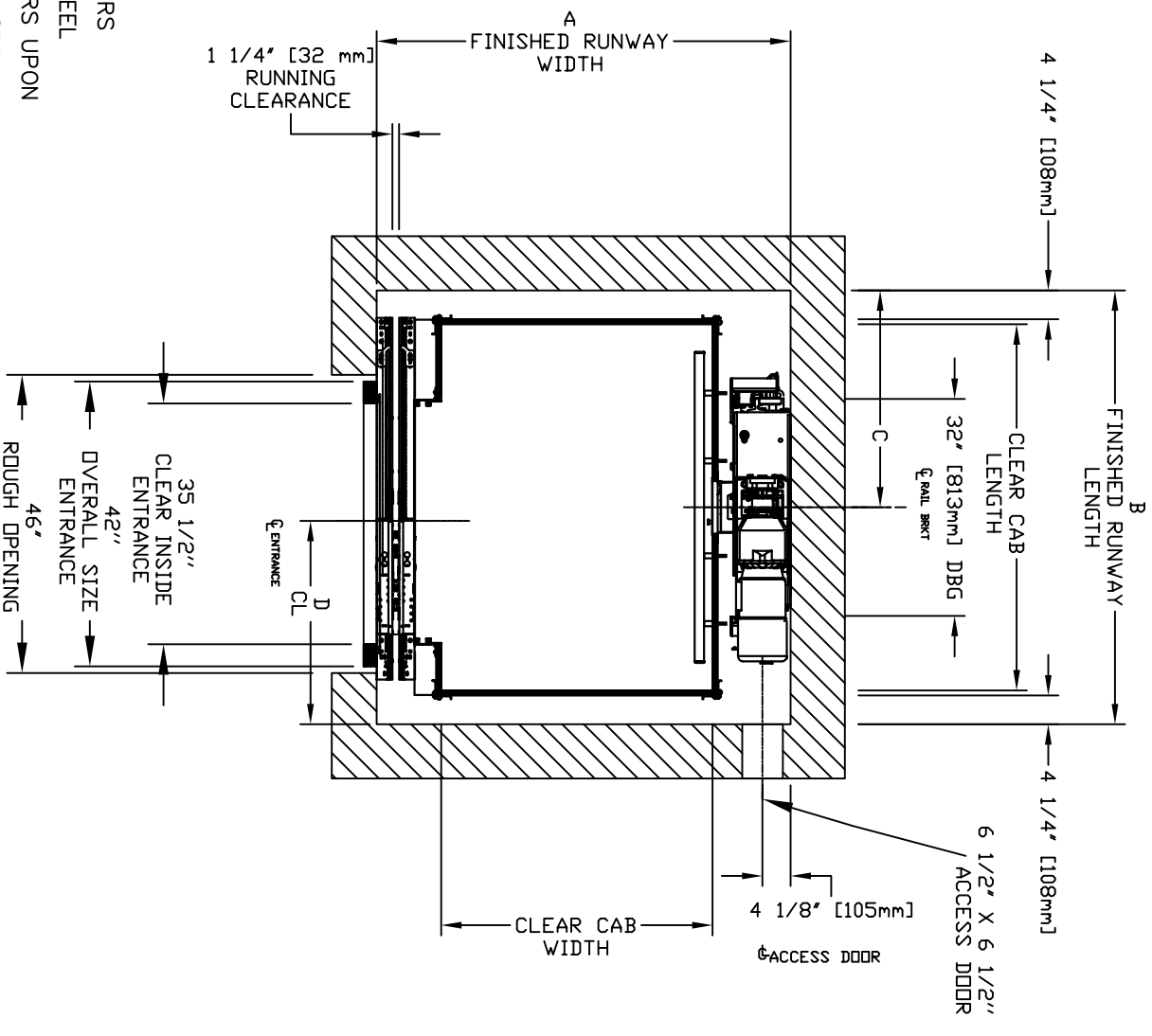


# ECLIPSE AUTO SLIM DOORS Model TYPE 5



**CHARACTERISTICS**

CAB DOOR TYPE: AUTO SLIM 2 SPEED DOORS  
 ENTRANCE DOOR TYPE: AUTO SLIM 2 SPEED DOORS  
 2 SPEED DOORS FINISH: PAINT OR STAINLESS STEEL  
 FULLY AUTOMATIC OPERATION TO OPEN THE DOORS UPON ARRIVAL AT THE LANDING LIGHTWEIGHT ALUMINUM SILL  
 EMERGENCY BACK-UP BATTERY SYSTEM  
 INFRARED DETECTION SYSTEM TO RETRACT DOORS BEFORE HITTING AN OBSTRUCTION

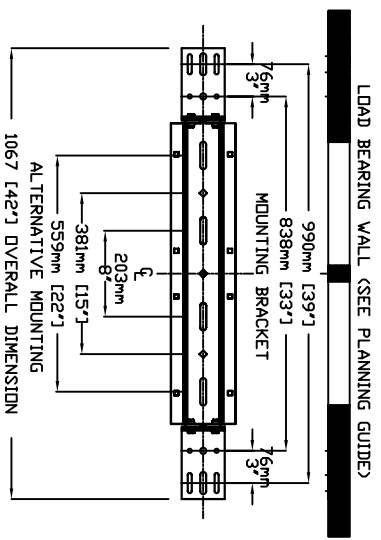
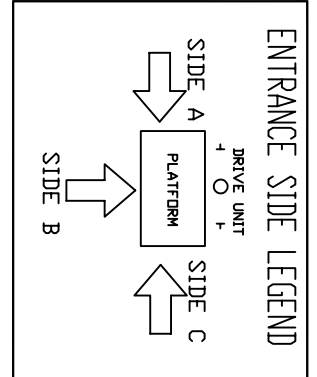


CLEAR INSIDE CAB WIDTH	CLEAR INSIDE CAB LENGTH	A FINISHED RUNWAY WIDTH		B FINISHED RUNWAY LENGTH		C RAIL CENTER LINE		D DOOR CENTER LINE	
		mm	Inches	mm	Inches	mm	Inches	mm	Inches
914	36	1486	58 1/2	1626	64	813	32	762	30
914	36	1486	58 1/2	1778	70	889	35	762	30
1016	40	1588	62 1/2	1626	64	813	32	762	30

RAIL FORCES	*R1	*R2
FINAL RAIL BRACKET	RB3	BELOW THE MOTOR CONCORD REPRESENTATIVE FOR EXACT LOCATION
INTERMEDIATE RAIL BRACKET	RB2	32" [813mm] INTERVALS AFTER 2nd BOTTOM BRACKET
BOTTOM RAIL BRACKET	RB1	39" [991mm] & 71" [1804mm] ABOVE PIT FLOOR

PIT FLOOR TO SUPPORT LOAD (INCLUDES IMPACT)	PIT FORCE: R3
1382 kg [304 lbf]	245 kg / m [540 lbs / ft]
882 kg [194 lbf]	180 lbs / ft
2909 kg [6400 lbs]	



\*CANNOT HAVE HABITABLE SPACE BELOW PIT\*

BELOW THE MOTOR CONCORD REPRESENTATIVE FOR EXACT LOCATION

32" [813mm] INTERVALS AFTER 2nd BOTTOM BRACKET

39" [991mm] & 71" [1804mm] ABOVE PIT FLOOR

## RESIDENTIAL ELEVATOR ECLIPSE SLIMS DOORS TYPE 5

DOCUMENT REVISION 001, DATE: 11/18/10

ALL INFORMATION IS SUBJECT TO CHANGE. PLEASE REFERENCE OUR ON-LINE DRAWINGS AT [WWW.SAVARIA.COM](http://www.savaria.com) FOR THE MOST RECENT UPDATES

